

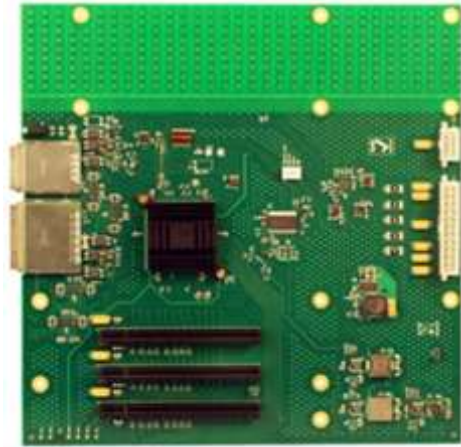
PCIe MicroATX Backplane (2018)

Micro ATX expansion backplane with (3) x8 PCIe slots, x4 and x8 PCIe cable connectors, (1) ATX power connector, (1) ATXe power connector

PN: OSS-PCIe-μATX-BP-2018

Features

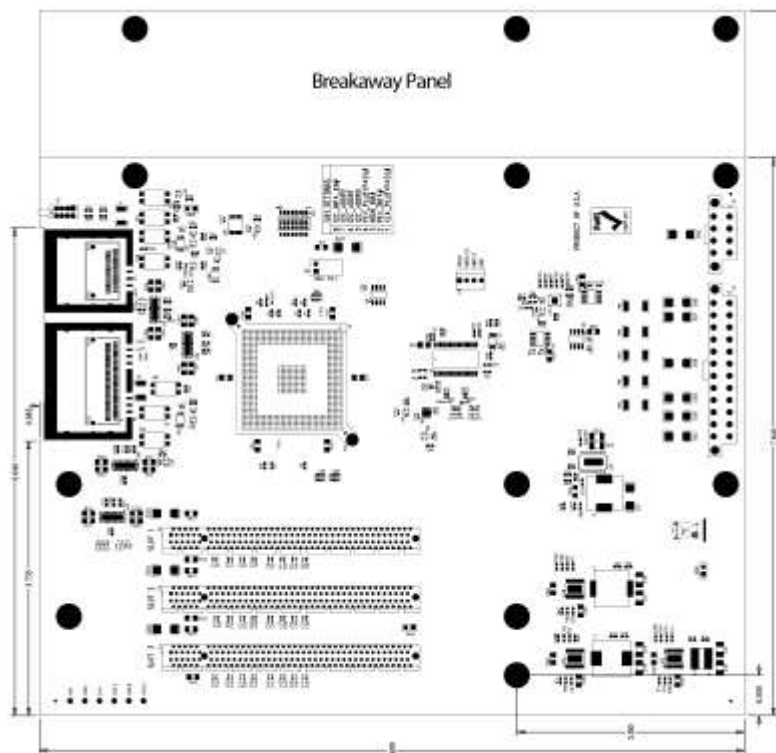
- MicroATX-form factor
- Provides dual PCIe cable inputs in x4 or x8
- PEX8533 provides three x8 downstream links to three PCIe on-board x16 slots
- Can be resized in small form factor



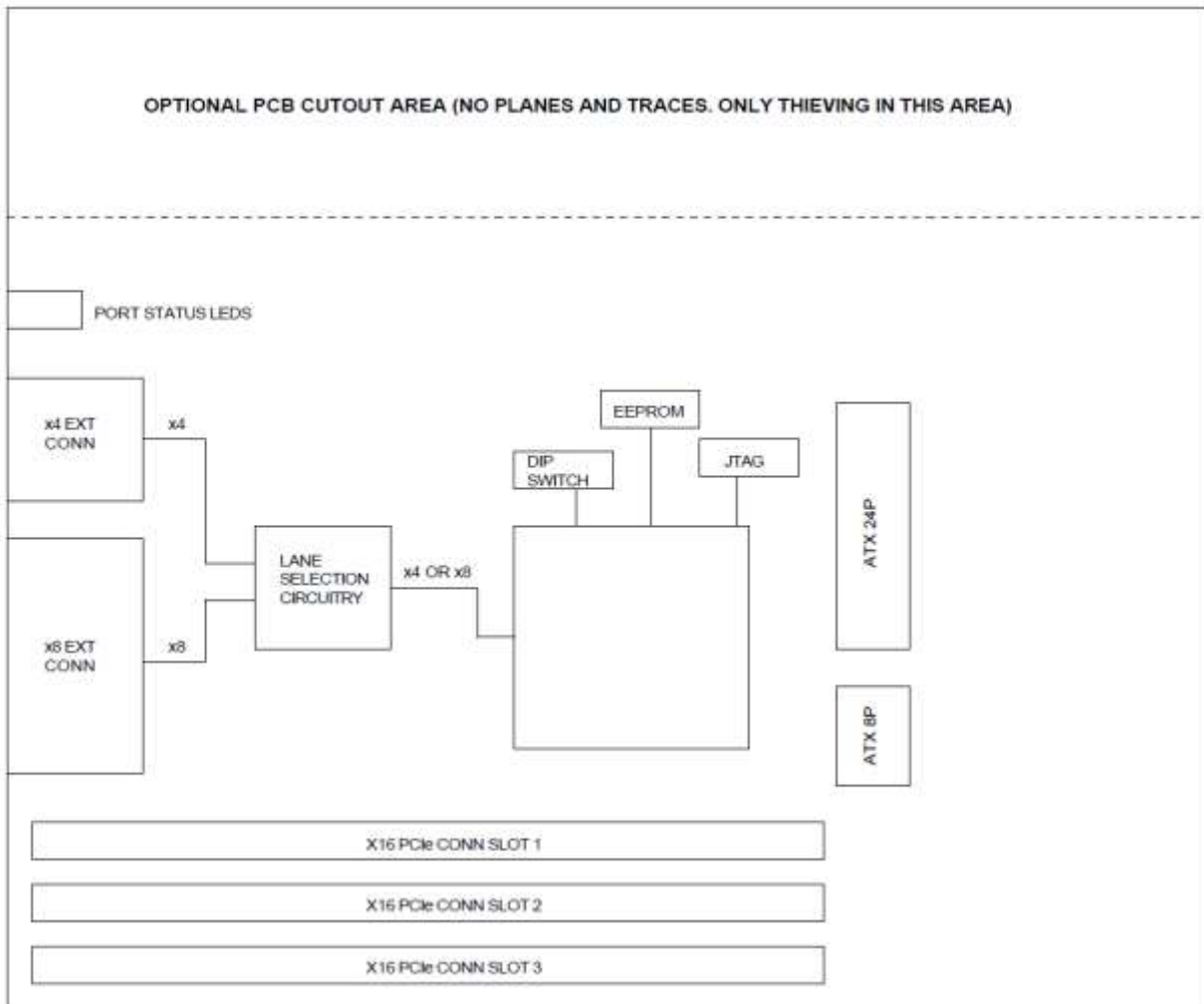
Specifications

Dimensions:	9.6" W x 9.6 H"
Power:	24-pin mini ATX connector (Molex PN 39-29-9242) 8-pin mini ATX connector (Molex PN 39-29-9082)
On-board Regulated Voltages:	1V, 1.5V, 1.8V, 3.3AUX
Front Panel LEDs:	Port status indicates stable x4 or x8 links: 1 upstream, 3 downstream
PCIe Switch:	PLX PEX8533
Cable Connectors:	PCIe x8

Dimensional Drawing



Block Diagram



Connector Pin-Outs

Connector	Definition
J1	I2C Interface
J2, J3	ATX Connectors

J1 – I2C Interface Connector (Molex P/N: 22-23-2041)

Pin	Definition
1	VDDAUX_3.3V
2	SMDAT
3	SMCLK
4	GND

J3 – ATX Connector (Molex P/N: 39-29-9082)

Pin	Definition	Pin	Definition
1	GND	5	+12V
2	GND	6	+12V
3	GND	7	+12V
4	GND	8	+12V

J2 – ATX Connector (Molex P/N: 39-29-9242)

Pin	Definition	Pin	Definition
1	+3.3V	13	+3.3V
2	+3.3V	14	-12V
3	GND	15	GND
4	+5V	16	PS_ON#
5	GND	17	GND
6	+5V	18	GND
7	GND	19	GND
8	PWRON	20	NC
9	+5VSB	21	+5V
10	+12V1	22	+5V
11	+12V1	23	+5V
12	+3.3V	24	GND