



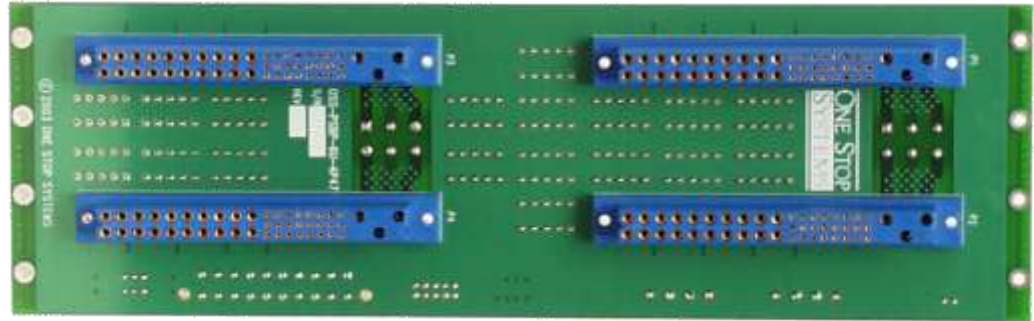
6U Quad P47 CPCI Power Supply Backplane

6U x 16HP power supply backplane with four P47 power connectors.

PN: OSS-CPCI-6U-PSBP-4P47

Features

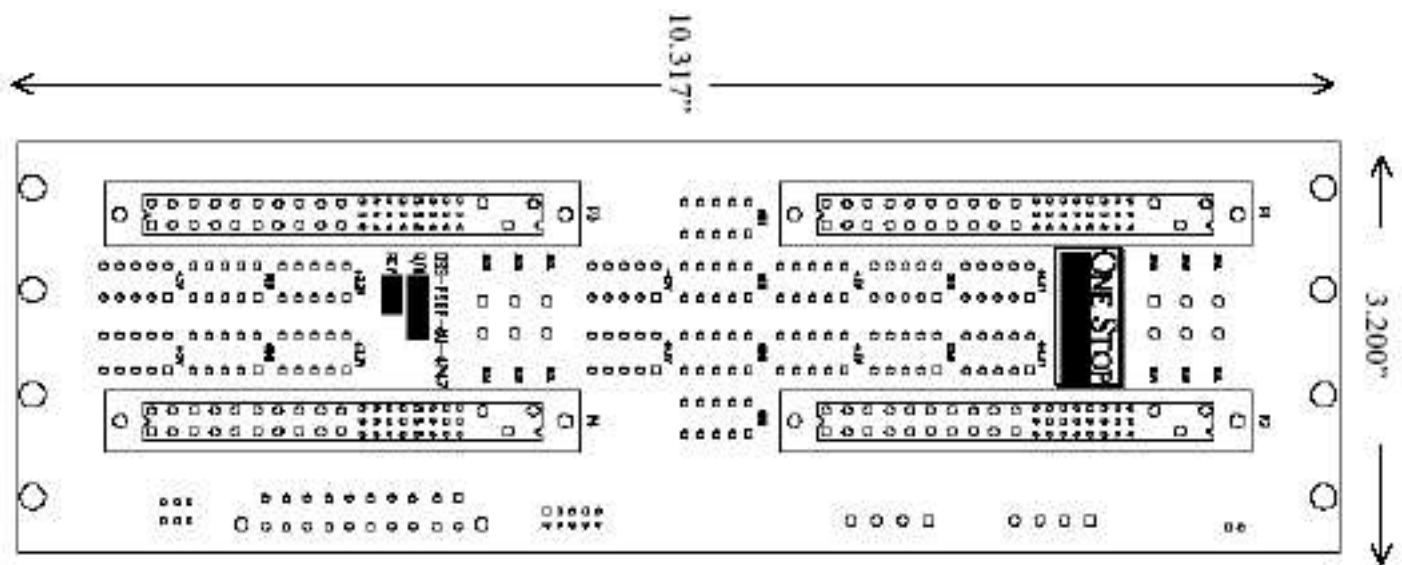
- 4 P47 connectors
- Power bugs for +5V, +3.3V, 12V, -12V and ground
- 6U x 16HP-wide
- -ATX version with ATX power connector
- Peripheral power connectors on rear



Specifications

Dimensions	3.150 inches wide x 10.317 inches high
Power Input	AMP 2x3-pin 350431-1
Power Supply Connectors	Positronic PCIH47F300A1/AA
Power Supply Outputs	3.3, 5, 12, -12 and GND
Peripheral Power Connector	AMP 4-pin 770997-1

Dimensional Drawing



Specifications subject to change without notice

